



+88 01711 466 342, +88 01618 855 558
+88 01723 376 841, +88 02 581 577 61

House-38(Gold House,9th floor), Road - 11(New) Dhanmondi R/A, Dhaka -1209

info@zdsi2012.com | www.zdsi2012.com



Condominium Apartment Complex at Bashundhara R/A

Zubion Breeze Blows & Happy Mornings

INDEX

1. About ZDSL Zubion Development Solution Limited	
Company Profile	02
2. Project Location	04
3. Common Amenities	06
4. Concept	08
5. Project Details of Zubion Breeze Blows	10
6. Project Details of Zubion Happy Mornings	22



Zubion started its journey in the real estate development sector in 2012 partnering with the renowned project named 'Aksir Nagar'.

Backing with the current good reputation and sector experience, Zubion has expanded its footprint to the building construction sector; naming as Zubion Development Solutions Limited (zdsl).

zdsl promises to provide a complete solution of the people's cherished residence focusing on quality, art, commitment, and value for money.

zdsl has skilled, experienced and committed management team who are all graduated from the University of Dhaka. To achieve the ultimate mission and vision of the company, zdsl gathers widely experienced professionals, trained both at home and abroad, including civil engineers, structural engineers, and architect.

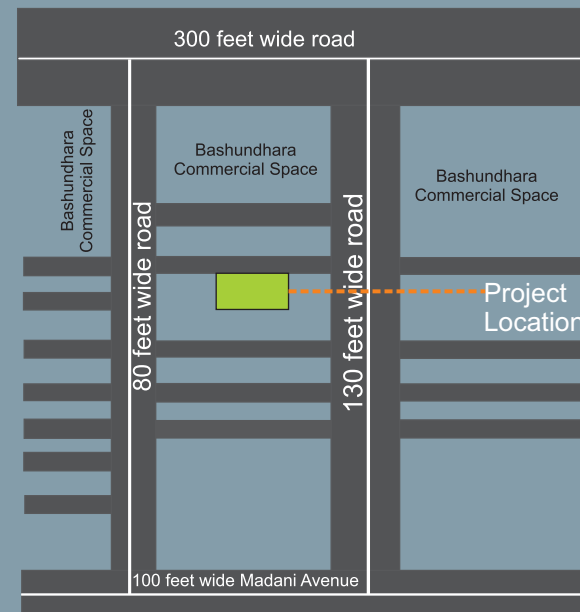
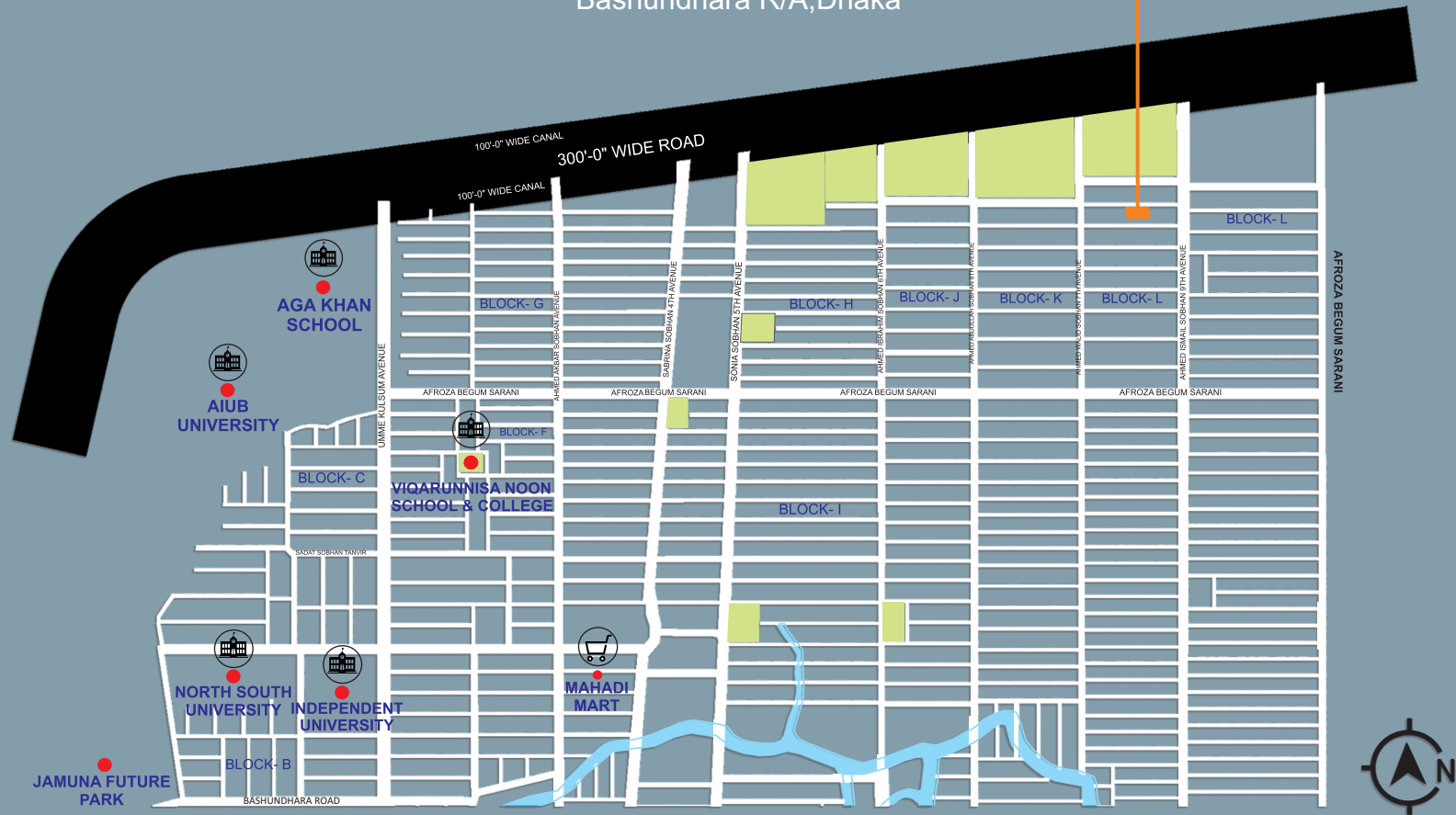
We cordially invite you to be a proud member of zdsl gathers widely experienced professionals, trained both at home and abroad, including civil engineers, structural engineers and architect.

We cordially invite you to be a proud member of zdsl family to make your living as an art.



Zubion Breeze Blows & Happy Mornings

Plot- 156, 157, 158,159,
Road-01, Block-L
Bashundhara R/A,Dhaka



Zubion Breeze Blows

Plot-156,157,Road-01,
Block-L,Bashundhara R/A,
Dhaka

Land area 10 katha
Storied B+G+09
Number of flat 17 Nos
Parking 24 Nos

Zubion Happy Mornings

Plot-158,159,Road-01,
Block-L,Bashundhara R/A,
Dhaka

Land area 10 katha
Storied B+G+09
Number of flat 25 Nos
Parking 25 Nos



NEARBY CONVENIENCES

EDUCATIONAL INSTITUTIONS

- Playpen School
- International School Dhaka (ISD)
- HURDCO International School
- North South University
- Independent University
- American International University

SHOPPING MALLS

- Jamuna Future Park
- Rupayan Shopping Square

GROCERY

- Mehedi Mart
- Bazar Sharabela
- Shwapno

HOSPITALS

- Evercare Hospital Dhaka
- Baridhara General Hospital Ltd.
- United Hospital Ltd.

CONFERENCE CENTER

- Bangladesh International Conference Center

BATHROOM FEATURES

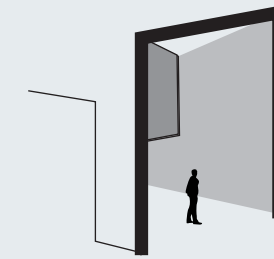
Door:	Laminated door shutter with Teak Chamble solid door frames.
Sanitary Ware & C.P. Fittings:	RAK/Similar Sanitary ware, C.P fittings and accessories are made in Bangladesh.
Shower Area:	Customized shower area with curtain rail as per design.
Tiles:	Wall & floor tiles are made-in-Bangladesh.
Counter Tops & Basin:	Marble countertop imported cabinet basin in master bathroom, other bathrooms will have imported pedestal basin as per developer's choice. Mirrors in all bathrooms.
Staff Bathroom:	Wall & floor tiles with long pan & moving shower all made-in-Bangladesh.

KITCHEN FEATURES

Platform:	Granite in kitchen counter top.
Wall & Floor Tiles:	Wall tiles(up to 7' height) and floor tiles.
Waterline:	Concealed hot & cold waterline.
Sink:	Single bowl sink.
Gas Connection & Detector:	LPG connection for oven/stove with gas leakage detector to prevent fire hazard.

APARTMENT FEATURES

Floors:	24"x24" mirror polished imported tiles in foyer, bedrooms, living, dining cum family lounge/dining cum living & all verandahs. Kitchen verandah and utility/staff room with non-slippery tiles matched to the floor scheme
Main Door:	Solid Chittagong Teak 3'-9"x7' main entrance door with door chain, apartment name plate, door handle with door lock with one look function.
Internal Doors:	Sliding glass windows and doors used as per floor plan, complete with mohair lining, rainwater barrier and fly-proof netting.
Sliding Doors & Windows:	Sliding glass windows and doors used as per floor plan, rainwater barrier and fly-proof netting.
Basin Provision:	Provision for basin at dining area.
Security & Safety:	Safety grills on windows & full height grill on kitchen verandahs.
Painting:	Smooth finished plastic paint on all internal walls & ceilings.
Electrical:	Imported gang type electrical switches, plug points and other fittings. Provision for air conditioners with power points in all beds, living cum dining area as per Electrical Design. Internet connection point in living cum dining area. Staff calling bell switch in master bedroom. Remote control light and fan switch in living cum dining area.
Lights:	Provision of wall brackets in all bedrooms, living, dining cum family lounge/living cum dining and common area. Appropriate lighting bathrooms, kitchen, staff bed & verandahs.
Cable Connections:	Concealed television line in all bedrooms and living area.



Double Height Entrance



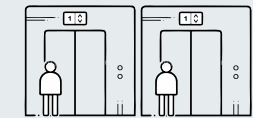
Children Playground



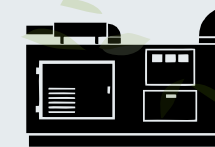
Gymnasium



Rooftop Garden and Community Space



Double Lift



One Stop Generator & Substation



Guest lounge and lobby



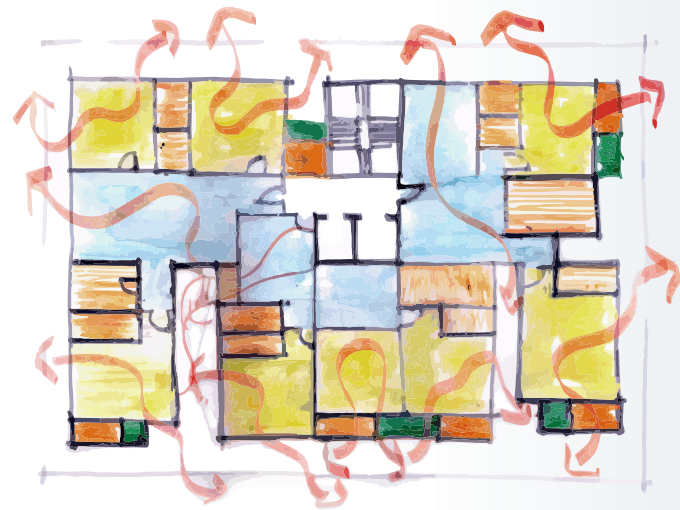
Community Prayer Space



Water body, Walking track, Community Space.



Internal Walkway

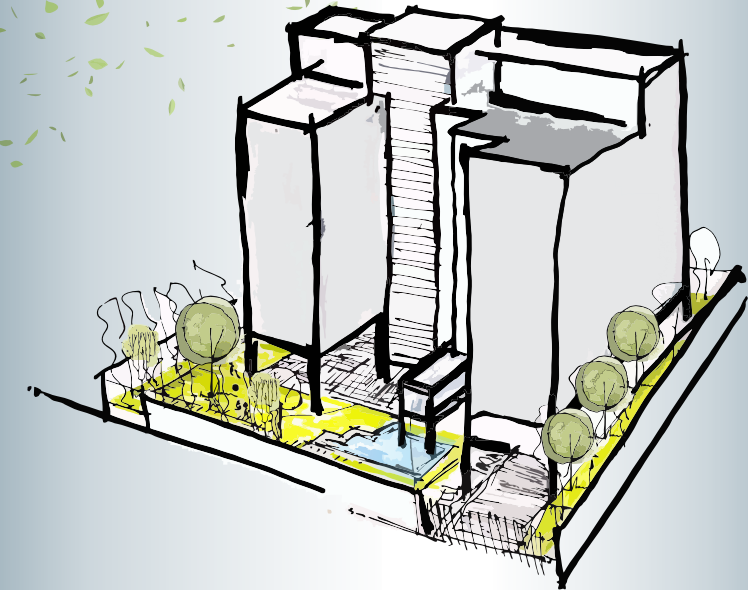


Zubion Breeze Blows

APARTMENT A 2480 SFT
APARTMENT B 2660 SFT

Zubion Happy Mornings

APARTMENT A 1780 SFT
APARTMENT B 1450 SFT
APARTMENT C 1680 SFT



The umbilical idea of designing the multi-family Residential Apartment was a playground which is a central courtyard surrounded by lush greenery adjacent to the entrance. There is a community space designed on the roof-top hatches green and a space for relaxation for the dwellers. In addition, competency in natural ventilation and daylighting was ensured whilst generating efficient functional layout in spatial arrangement. The vertical greeneries on different levels offer a calm and green living environment. All these sustainable environment-friendly features convey a hierarchical coherence with the built environment increasing occupant comfort.



Zubion Breeze Blows

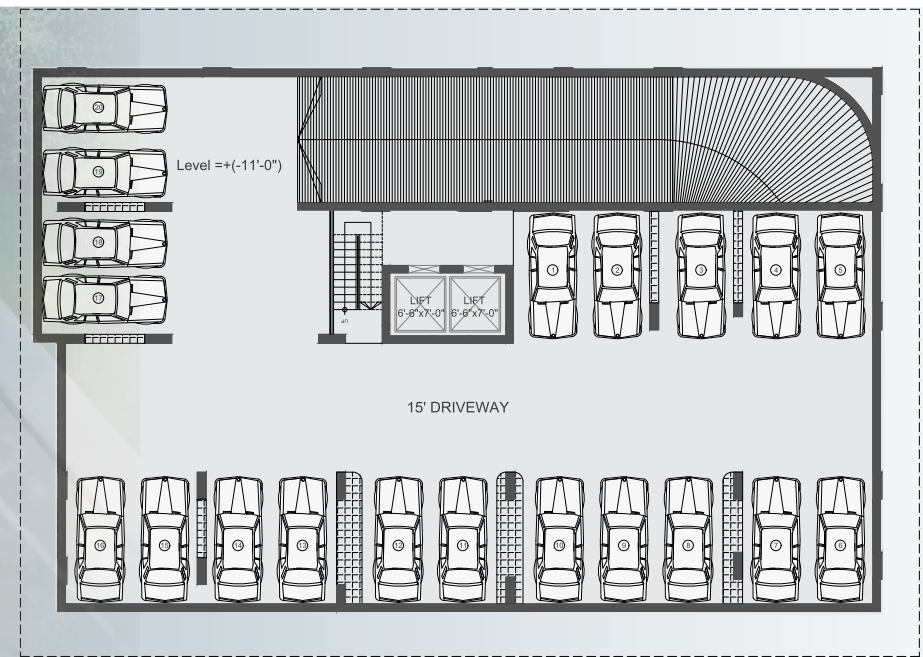




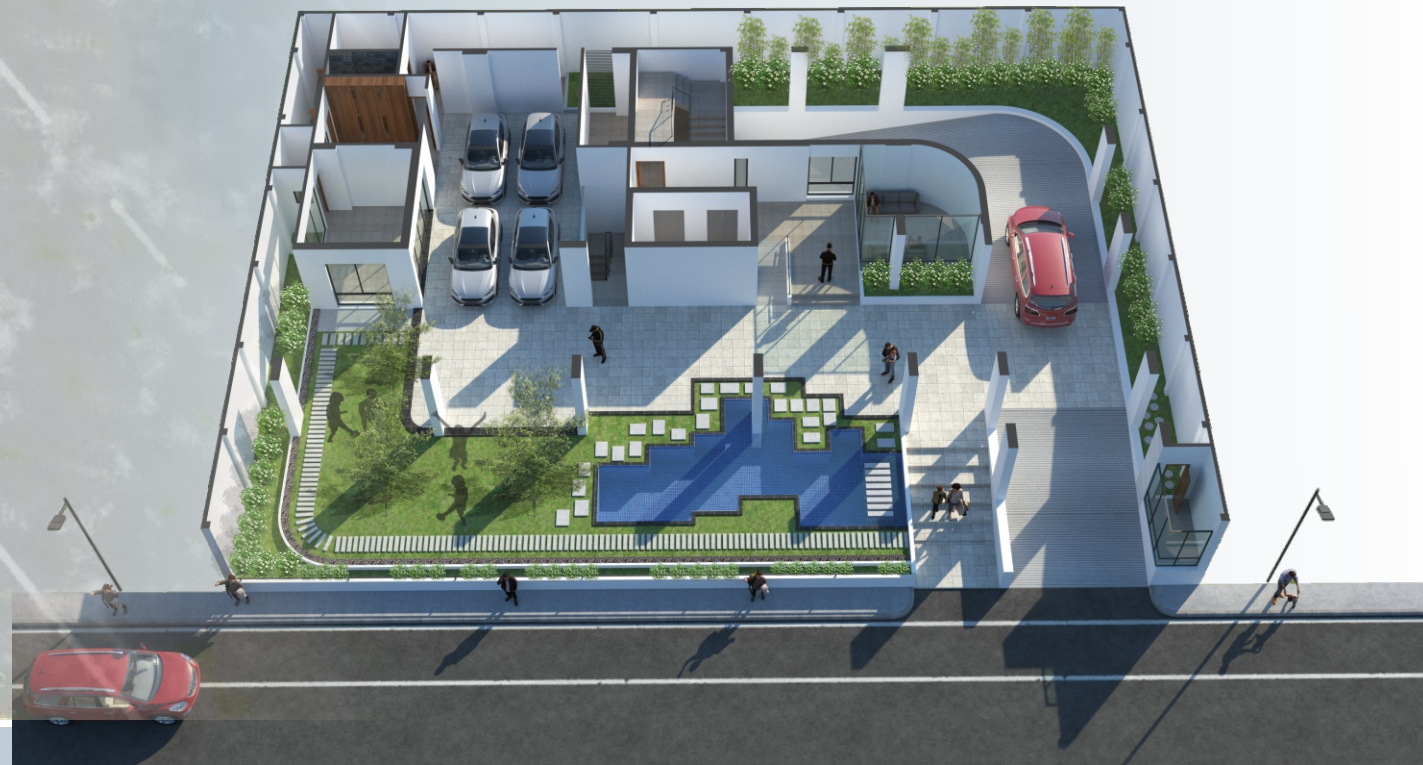
25 FT WIDE ROAD

⊕ GROUND FLOOR PLAN

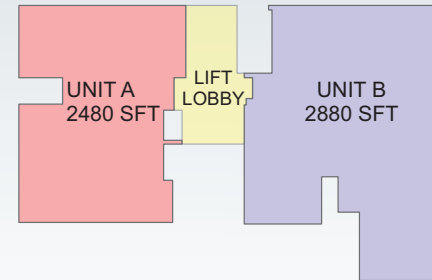
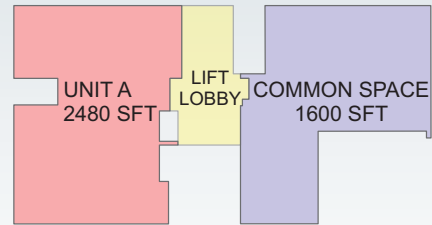
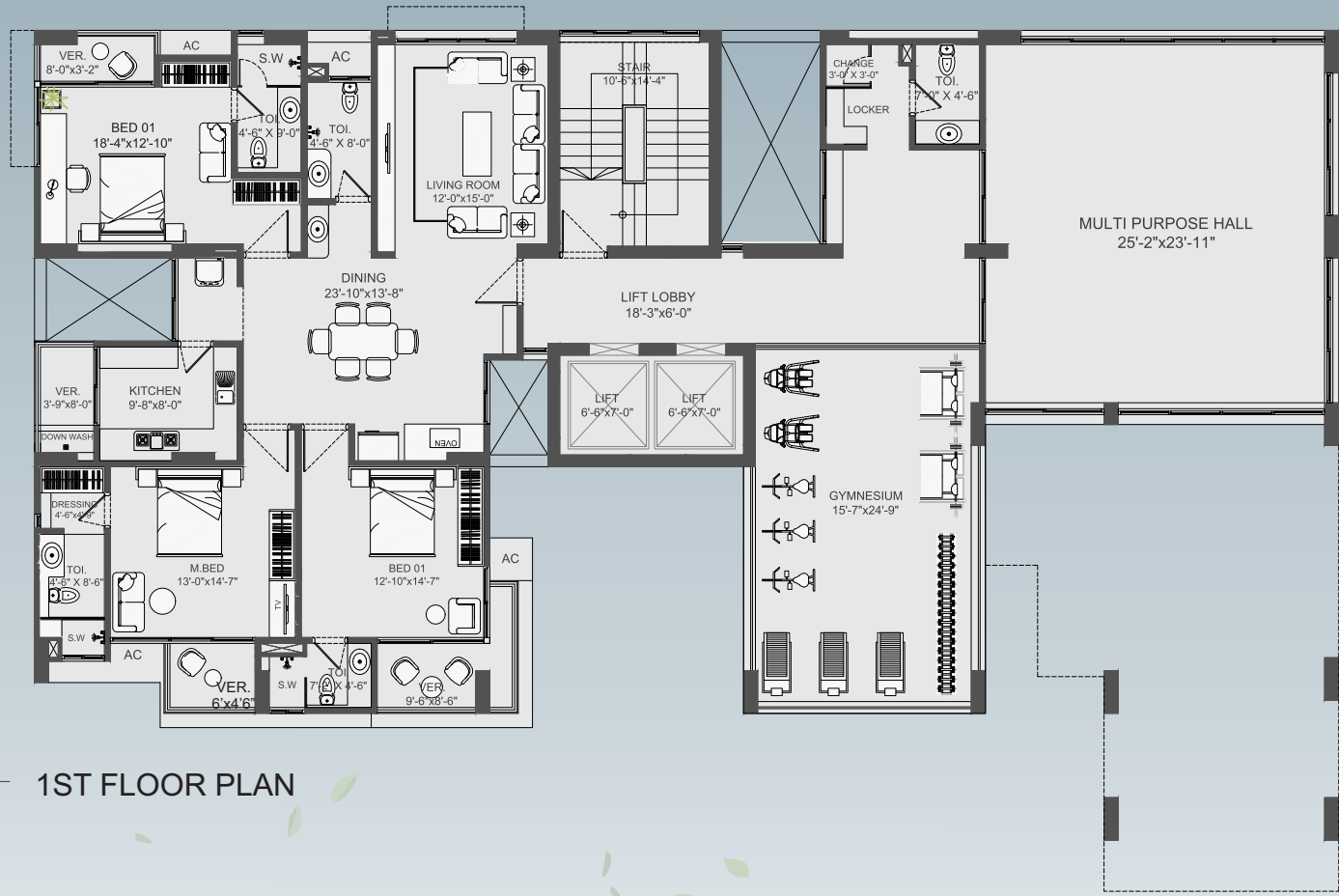
Bringing nature back into the city is a way to deal with urban sprawl. If cities feel a little more natural, people like to live there rather than moving out and dividing up another piece of land that shouldn't be touched.



BASEMENT PLAN

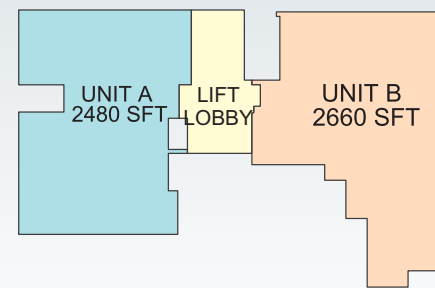


Everything has been planned. Very few things are well planned.



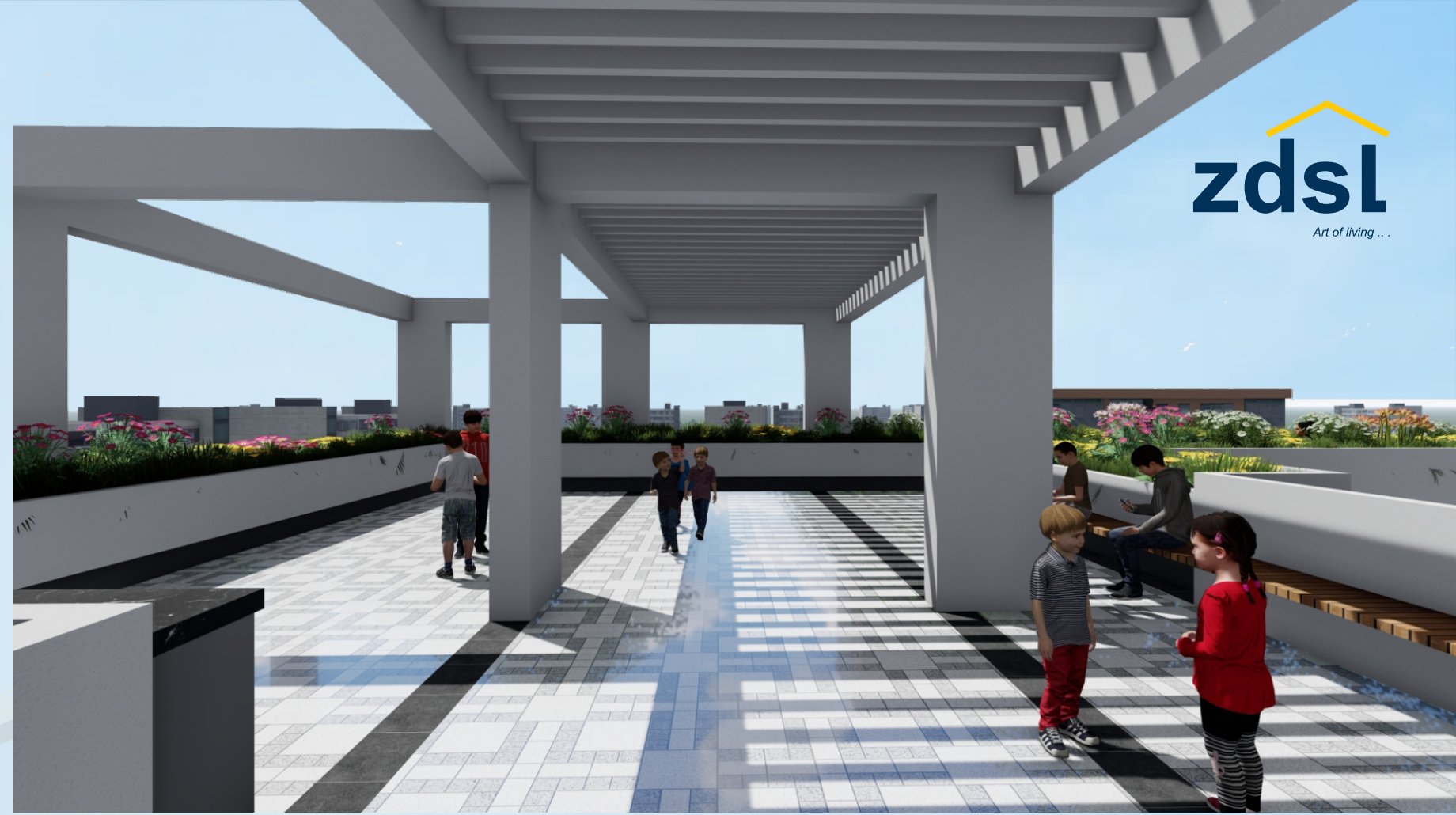


⊕ TYPICAL FLOOR PLAN
3rd To 9th Floor Plan

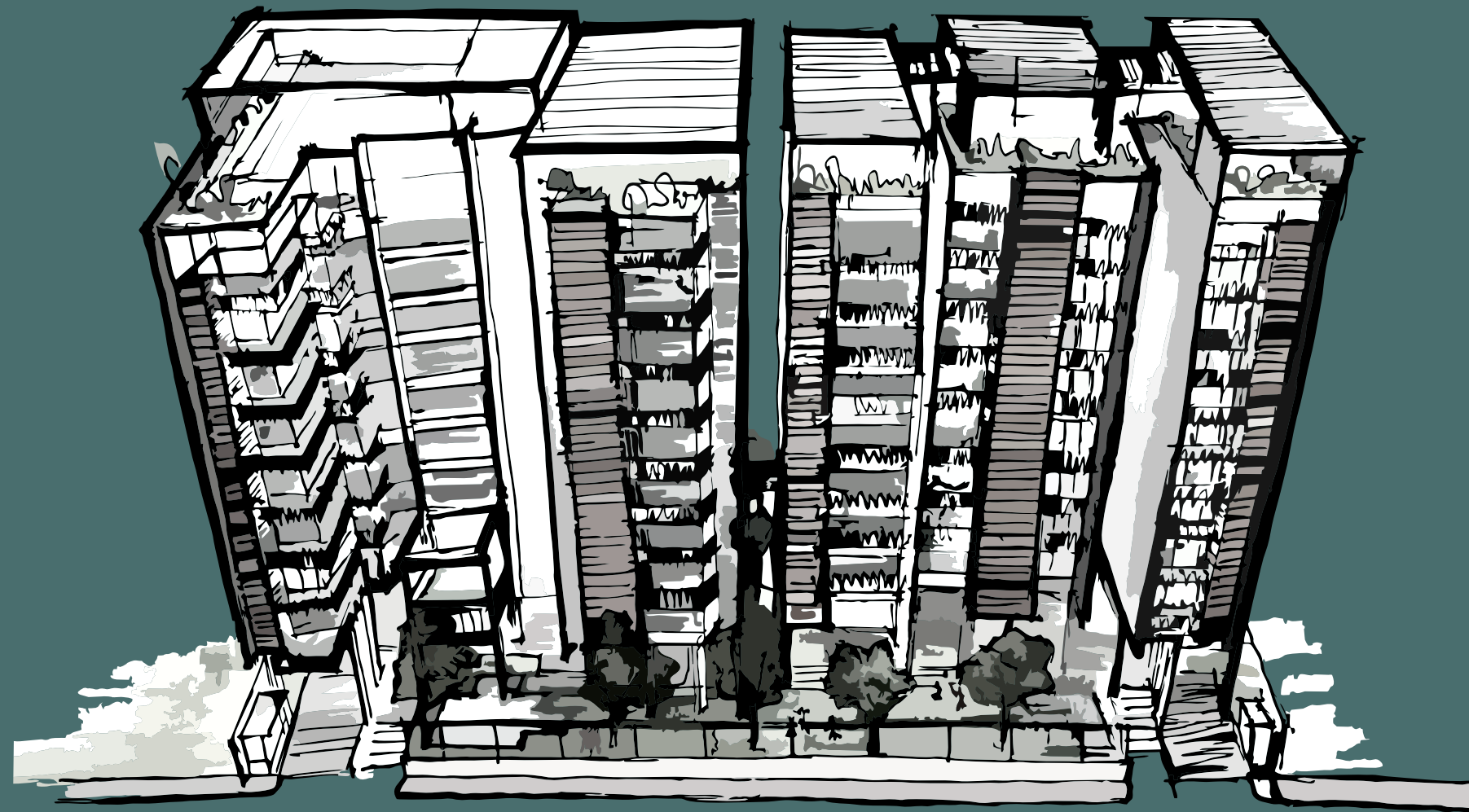




⊕ ROOF PLAN







*There must be a better way to make the things we desire, a method that doesn't harm the sky,
the rain, or the environment.*



**Zubion Development
Solutions Limited**

Zubion Happy Mornings

Condominium Apartment Complex at Bashundhara R/A



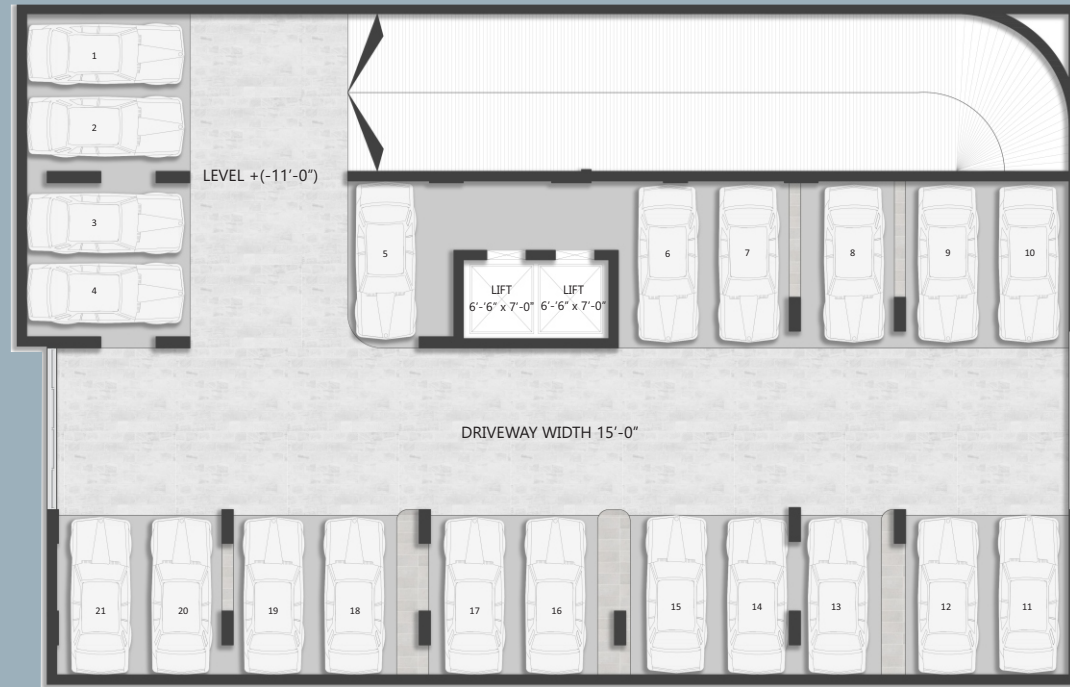


⊕ GROUND FLOOR PLAN



The completeness & breathable green space is all needed to start a perfect day in a perfect way.

Zubion Happy Mornings



⊕ BASEMENT PLAN

5 Katha (3600 sft) Green Playground for community and children

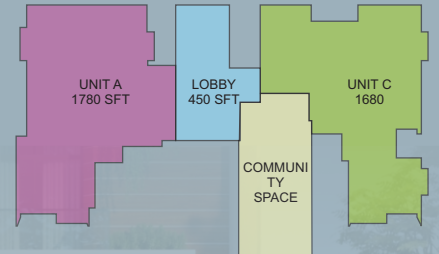
The Basement of the condominium has 21 car parking space with 15' wide driveway & 2 lifts to get direct entry at basement.

40% Open space

Zubion Happy Mornings

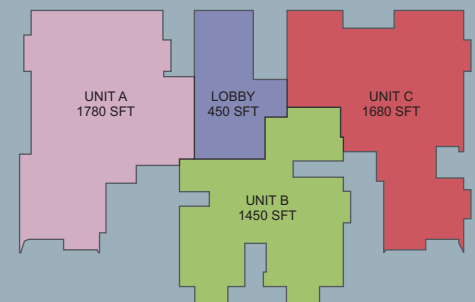


⊕ FIRST FLOOR PLAN





TYPICAL FLOOR PLAN



It's all in the details- Life at Zubion Happy Mornings, the open plan of the spacious living area draws in ample natural light & ventilation creating the perfect ambience and feeling of being at home.



⊕ ROOF PLAN



*Beautiful landscape to breath in life as it is meant to be sit back and relax -
Leisure time in nature and peace.*

